

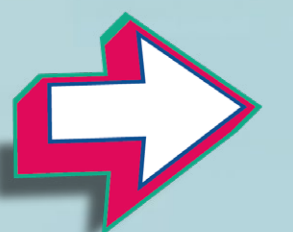


LONDON

SCHOOL & COLLEGE LEAVER FESTIVAL

ExCeL, 18-19 NOVEMBER 2025

SALES PACK



EDUCATING AND INSPIRING YOUNG LONDON

03

WHERE AND WHEN?

04

ABOUT THE
LONDON SCHOOL &
COLLEGE LEAVER FESTIVAL

05

WHO ARE OUR VISITORS
AND WHERE DO THEY
COME FROM?

06

HOW DO WE ATTRACT
OUR VISITORS?

07

HOW MUCH
DOES IT COST
TO PARTICIPATE?

08

NEXT STEPS...



The London School & College Leaver Festival will take place on **Tuesday 18 and Wednesday 19 November 2025**, at ExCeL London, which is regarded as one of the UK's leading event venues, hosting hundreds of events and over 4 million visitors annually.

Now, thanks to the Elizabeth Line the venue is super accessible, only 20 mins from Paddington Station and just 10 from Liverpool Street.

Opening times

Day 1: 10.00-14.30

Day 2: 10.00-14.00



What is the London School & College Leaver Festival?

- A two day, fully interactive and immersive festival held to educate and inspire young London.
- **20,000** visitors.
- With Social Mobility at the heart of everything we do this event is promoted to every Secondary School, College and PRU in London with funding provided to make attendance as easy as possible for everyone.
- **Over 120 exhibitors and supporters** drawn from across the UK, including employers, training providers, FE, HE and professional bodies.



Most of our visitors are from School and College year groups 13, 12 and 11.

This event is promoted to every Secondary School, FE College, PRU and SEN Establishment, as well as other educational and community groups, across London and the surrounding counties.

Track your visitor interactions for better ROI.

Included in your booking is use of our bespoke scanner app, which allows staff on your stand to scan the QR code of any visitor. All data is then sent to your main booking contact within three days of the event taking place, making follow up as easy as possible.

[Click here to watch a video about the scanner app.](#)



We maintain a database of senior contacts within every educational establishment in our target area and have multiple contacts at each, these contacts include:

- **Heads/Principals**
- **Year Heads**
- **Careers Leads**

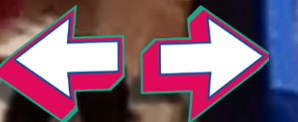
We provide a **travel bursary** towards the cost of transport for education establishments bringing groups to visit. At a time where budgets are seriously under pressure this gives us a distinct advantage over similar events and encourages Schools/Colleges to bring whole year groups.



HOW MUCH DOES IT COST TO PARTICIPATE?

07

Our package prices start at **£5495 + VAT**. If you are a local SME business please do get in touch regarding our subsidised packages (please note these are limited and offered on a first come, first served basis, subject to our terms and conditions).



If you would like to find out more information, then the best thing to do would be to arrange a short Teams meeting with **Dan Webster**, Client Accounts Manager for the London School & College Leaver Festival. We'll take up no more than 15 minutes of your time!



[CLICK HERE](#) to book a Teams meeting now.

Or alternatively contact **Dan Webster** on **0208 159 2412**
or **dan@nasevents.co.uk**

